



Oxford Cambridge and RSA

Monday 22 May 2023 – Afternoon

**GCSE (9–1) Geography A
(Geographical Themes)**

J383/01 Living in the UK Today

Resource Booklet

Time allowed: 1 hour



INSTRUCTIONS

- Do **not** send this Resource Booklet for marking. Keep it in the centre or recycle it.

INFORMATION

- This document has **4** pages.

Fig. 1

A landscape at Carding Mill, Shropshire



Fig. 2

A pictogram showing the average number of cars entering a city at 9:00 am on one day

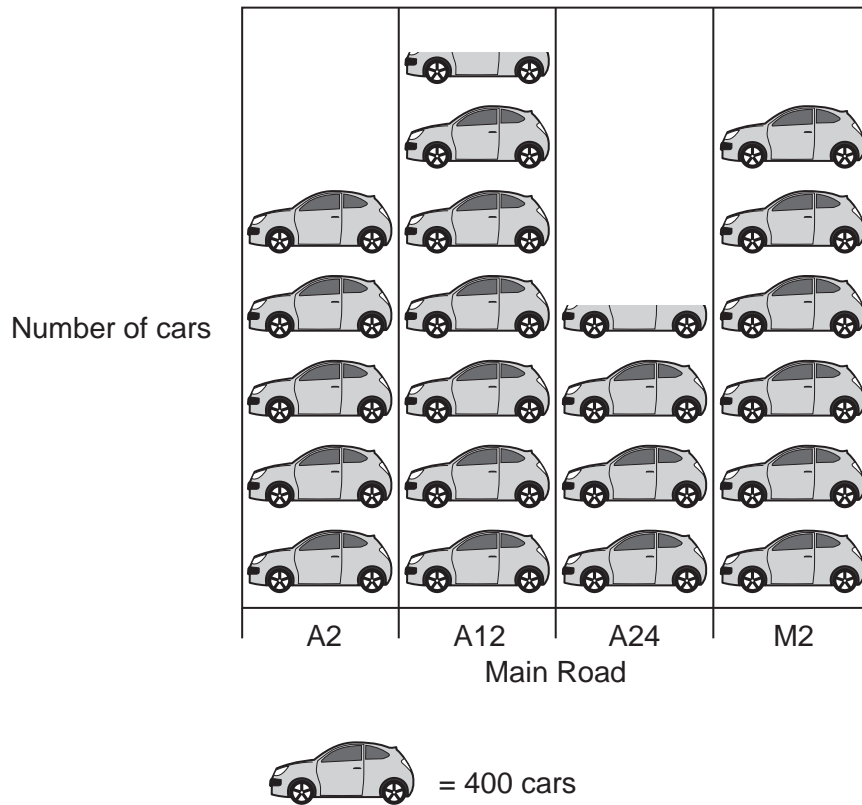
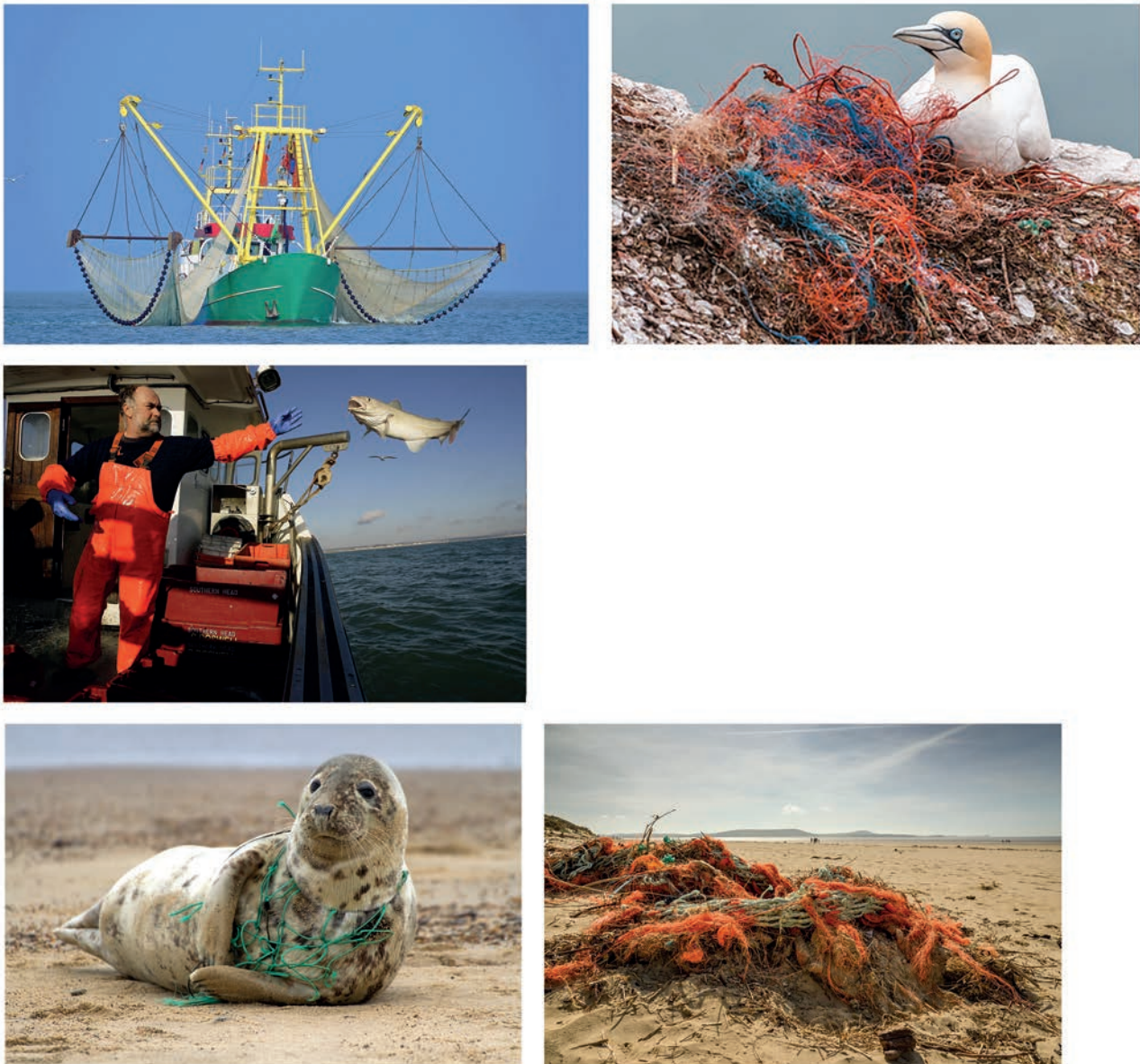


Fig. 3

The impacts of commercial fishing



OCR

Oxford Cambridge and RSA

Copyright Information

OCR is committed to seeking permission to reproduce all third-party content that it uses in its assessment materials. OCR has attempted to identify and contact all copyright holders whose work is used in this paper. To avoid the issue of disclosure of answer-related information to candidates, all copyright acknowledgements are reproduced in the OCR Copyright Acknowledgements Booklet. This is produced for each series of examinations and is freely available to download from our public website (www.ocr.org.uk) after the live examination series. If OCR has unwittingly failed to correctly acknowledge or clear any third-party content in this assessment material, OCR will be happy to correct its mistake at the earliest possible opportunity.

For queries or further information please contact The OCR Copyright Team, The Triangle Building, Shaftesbury Road, Cambridge CB2 8EA.

OCR is part of Cambridge University Press & Assessment, which is itself a department of the University of Cambridge.